

PREMIER EAST VALLEY INDUSTRIAL PARK

NOW AVAILABLE

North Scottsdale

Fountain Hills



4245 East Palm Street



Loop 202 (Red Mountain) Freeway

Greenfield Road

Oasis Street

McDowell Road



Features

- 65-acre industrial, office and commercial development park
- Excellent access to the Loop 202 (Red Mountain) Freeway at Greenfield Road interchange
- Approximately 2- to 11-acre parcels available
- Improved lots and build-to-suit opportunities available
- Close proximity to Mesa's largest industry and employment centers—Boeing, Talley Industries, TRW, Lockheed Martin and Special Devices
- Nearby amenities include Longbow Golf Club and Falcon Field Airport

DAEDALUS



Northwest Corner of Greenfield and McDowell Roads • Mesa, Arizona

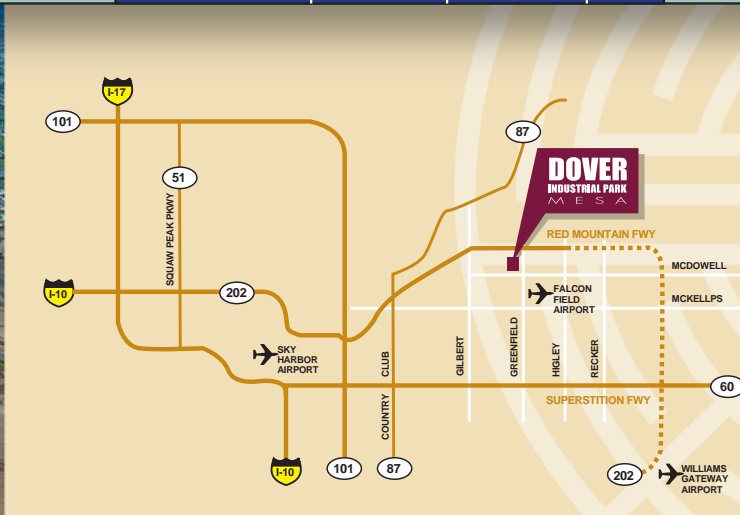
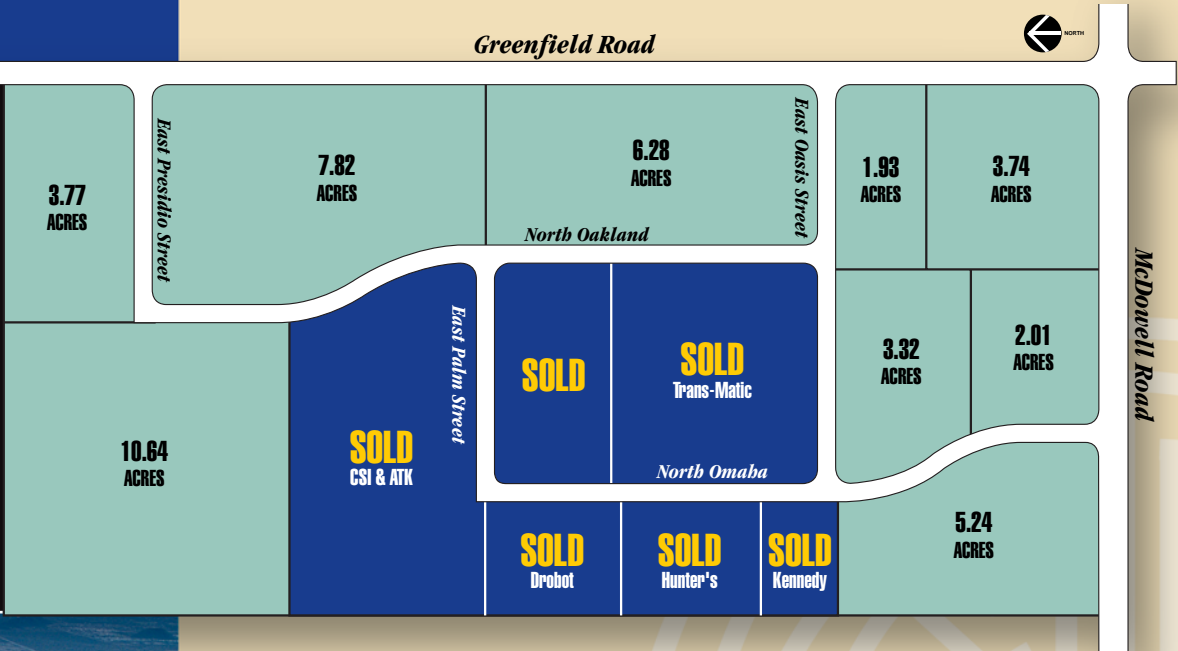
N O W A V A I L A B L E



Fully developed, Dover Industrial Park will consist of approximately 700,000 square feet of buildings for industrial, office and commercial occupancy and a projected daily employment within the Park of 1,500.

DOVER INDUSTRIAL PARK
M E S A

Premier East Valley Industrial Park



For more information, please contact:
Daedalus Real Estate Advisors, LLC
(602) 889-2301

ANOTHER
DAEDALUS
DEVELOPMENT

DAEDALUS REAL ESTATE ADVISORS, LLC
4148 North Arcadia Drive
Phoenix, Arizona 85018-4302
Office 602-889-2300 Fax 602-889-2299
www.DaedalusLLC.com